



Photo: UNICEF South Sudan

SOUTH SUDAN

2020 HUMANITARIAN RESPONSE IN REVIEW

Strategic objectives

- 1 Reduce morbidity and mortality, as well as suffering from protection threats and incidents, of the most vulnerable women, men, girls and boys
- 2 Facilitate safe, equitable and dignified access to critical cross-sectoral basic services to enable people to meet their basic needs
- 3 Enable vulnerable people to recover from crisis, seek solutions to displacement and build resilience to acute shocks and chronic stresses through targeted programming to support coping capacities and livelihoods in prioritized areas

Key figures

People in need

7.5M

People targeted

7.6M*

People reached

7.3M

Requirements (US\$)

1.9B

Funded (US\$)

1.2B

Communities across South Sudan, especially women and children, were hit hard in 2020 by the multiple shocks of intensified conflict and sub-national violence, a second consecutive year of major flooding, and the impacts of COVID-19 related restrictions on livelihoods. An estimated two-thirds of the population needed humanitarian assistance and protection services.

Humanitarian organizations worked tirelessly to meet people's priority needs, guided by three strategic objectives set in the 2020 Humanitarian Response Plan (HRP). By the end of the year, some 7.3 million women, men and children were reached with some form of assistance or protection through the plan. Key achievements included more than 5 million people reached with food security and livelihood support; some 3.3 million emergency health consultations conducted; and more than 2.1 million people benefiting from access to improved water sources. An estimated 1.4 million people were reached with protection services, including child protection and protection from gender-based violence. Some 1.1 million children and new mothers were treated for acute malnutrition. A million people, most of whom were displaced, received emergency shelter and essential household items and nearly 600,000 displaced people benefited from camp coordination and management support. Some 300,000 children received education in emergencies, less than planned due to COVID-19 related school closures. More than 8,600 metric tons of humanitarian supplies were transported to 166 locations. Among the more than 200 HRP partners operating across the country, nearly 60 per cent were South Sudanese non-governmental organizations.

The humanitarian response was hampered by sub-national violence, violence against humanitarian personnel and assets, bureaucratic impediments, operational interference, and COVID-19 related restrictions on movement. Remote communities were cut off from assistance during the rainy season. Five counties experienced high access constraints in 2020, compared to three in 2019. (Read more about humanitarian access in the [2020 access overview](#).)

The humanitarian response was enabled by generous donor contributions. The response plan was 65 per cent funded, with US\$1.2 billion received toward the \$1.9 billion appeal. This included \$38 million allocated through the United Nations Central Emergency Response Fund (CERF) and \$62 million disbursed through the South Sudan Humanitarian Fund (SSHF).

* People targeted is higher than the people in need as it includes newly vulnerable people during COVID-19 based on market dependence.

Response highlights in 2020



JANUARY 2020

Food insecurity

Humanitarian organizations scaled up their response for food insecure people in parts of Jonglei, Northern Bahr el Ghazal and Upper Nile.



FEBRUARY 2020

Sub-national violence

An upsurge in violence severely impacted humanitarian operations in Jonglei. Assessments were hindered and aid workers were relocated.



MARCH 2020

Pooled fund allocations

SSHF launched a \$35-million standard allocation for frontline activities under the 2020 HRP. CERF allocated \$17 million for food security and protection activities.



APRIL 2020

Reduced footprint

The humanitarian footprint reduced considerably across the country in the months after COVID-19 was confirmed in South Sudan in early April.



MAY 2020

COVID-19 response

SSHF launched a reserve allocation of \$5 million to procure 70 tons of personal protective equipment to protect frontline health workers responding to COVID-19.



JUNE 2020

COVID-19 Addendum to the HRP

The COVID-19 Addendum to the HRP, including the National COVID-19 Response Plan, brought the overall humanitarian appeal for 2020 to \$1.9 billion.



JULY 2020

Conflict displacement

Humanitarian organizations responded to the needs of more than 100,000 people displaced by sub-national violence in Jonglei and the Greater Pibor Administrative Area.



AUGUST 2020

Flood response

A three-phased response approach was launched to meet the needs of close to half a million flood-affected people in low-lying areas along the Nile River.



SEPTEMBER 2020

PoC site transition

Bor was the first Protection of Civilians (PoC) site to transition into an IDP camp in 2020. Wau and Juba sites followed in October and November. Bentiu and Malakal PoC sites remain pending.



OCTOBER 2020

Flood response funding

CERF and SSHF released a total of \$20 million to provide life-saving assistance to 360,000 most vulnerable people affected by widespread flooding since July.



NOVEMBER 2020

Aid worker security

Two aid workers were killed within days while providing humanitarian assistance in Jonglei, bringing the total number of aid workers killed in 2020 to nine.



DECEMBER 2020

Scale up in food insecure areas

The humanitarian community scaled up assistance to save lives and avert collapse of livelihoods in six counties in response to the latest food security analysis.

People reached and operational presence

PEOPLE
TARGETED

7.6M

PEOPLE
REACHED

7.3M

% OF
TARGET

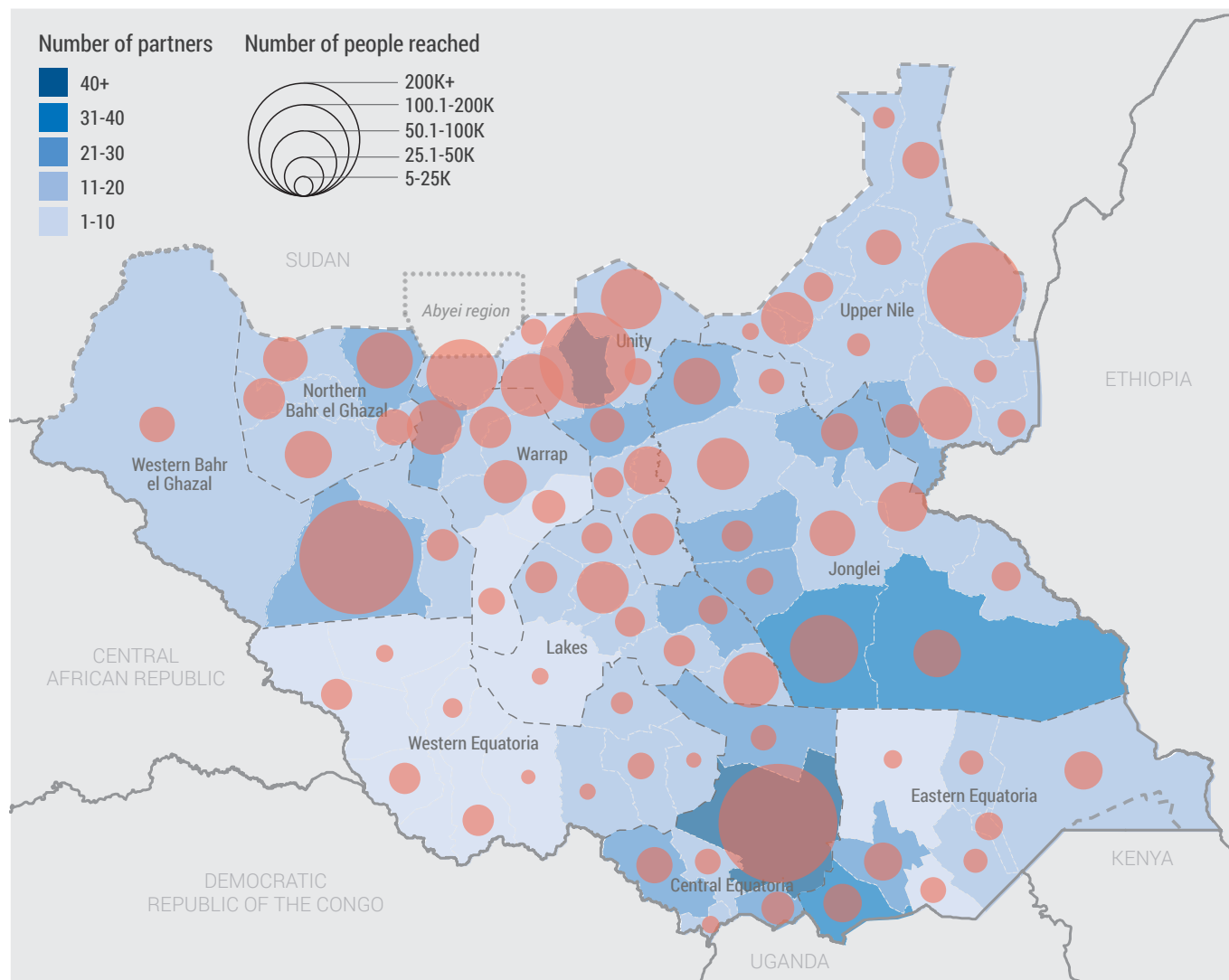
97%

OPERATIONAL
PARTNERS

209

% OF PARTNERS
NATIONAL NGOS

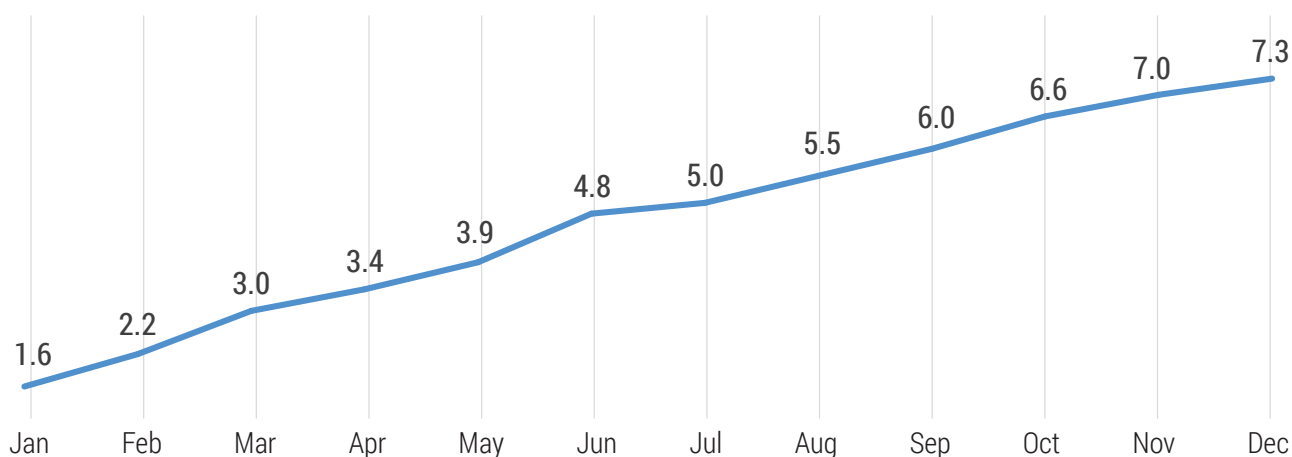
58%



The administrative boundaries and names shown and the designations used on the maps in this report do not imply official endorsement or acceptance by the United Nations. Final boundary between the Republic of Sudan and the Republic of South Sudan has not been determined. Final Status of Abyei area is not yet determined.

People reached with some form of assistance

cumulatively by month (in millions)

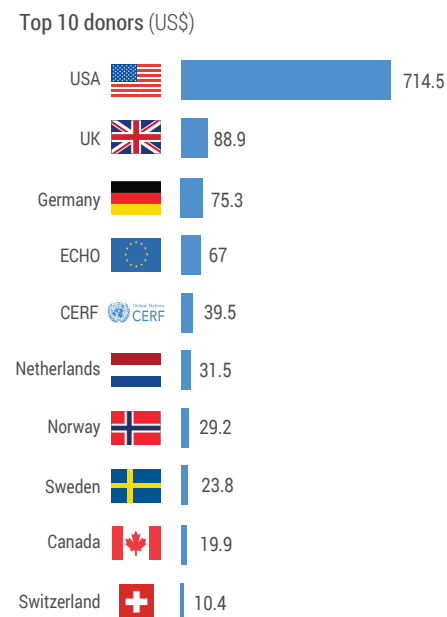
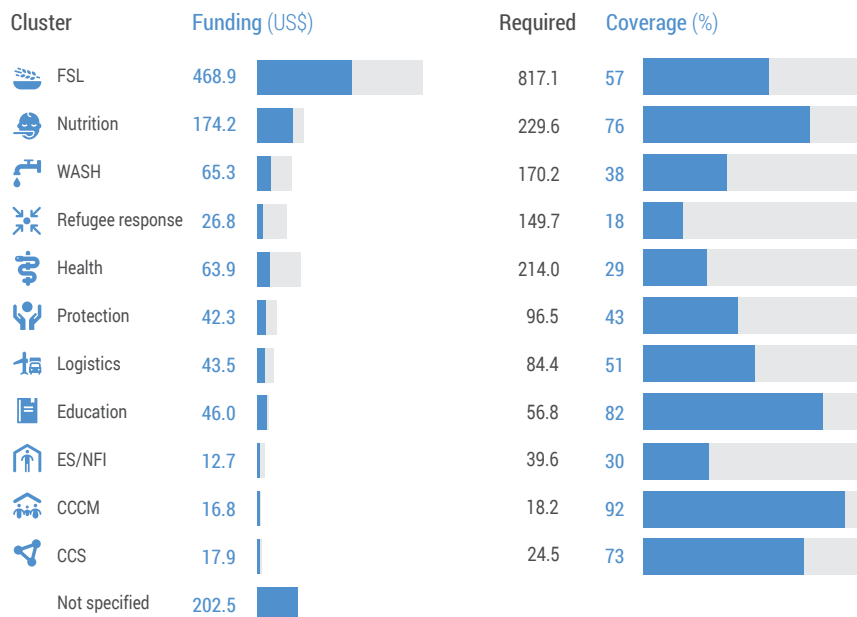


Funding for 2020 Humanitarian Response Plan

 **\$1.9B** funding required

 **\$1.2B** funded

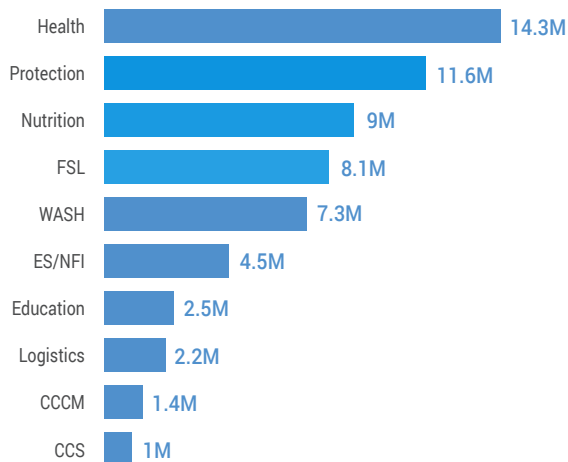
 **65%** funded



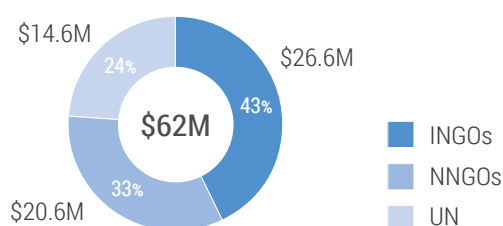
South Sudan Humanitarian Fund

 **\$62M** allocated

By sector (US\$)



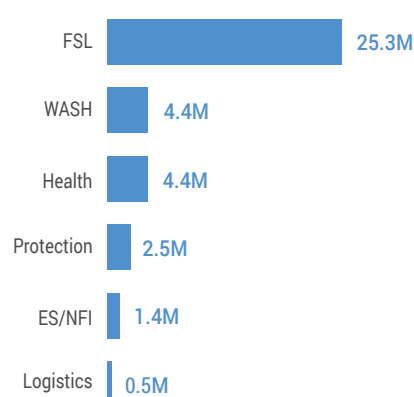
By organization type (US\$)



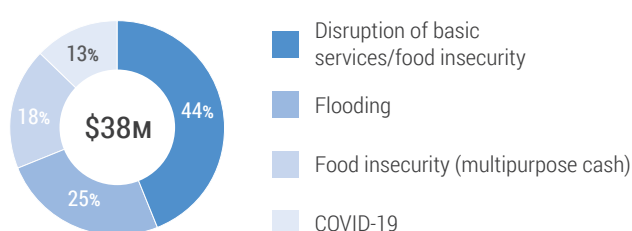
Central Emergency Response Fund

 **\$38M** allocated

By sector (US\$)



By allocation (US\$)



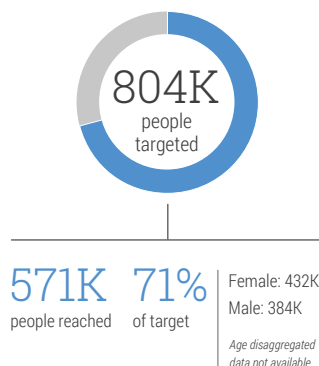
Note: Funding data for 2020 updated from Financial Tracking Service (FTS) as of 24 February 2021. SSHF and CERF funding are updated as of 31 December 2020.

Response achievements by cluster

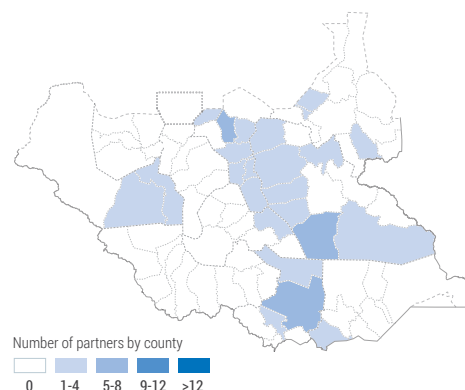


Camp Coordination and Camp Management

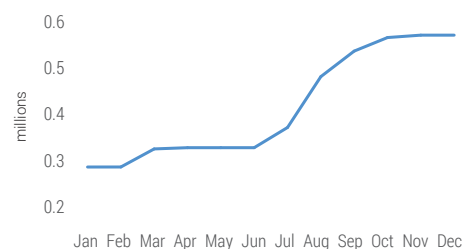
1.6M PEOPLE IN NEED



OPERATIONAL PRESENCE

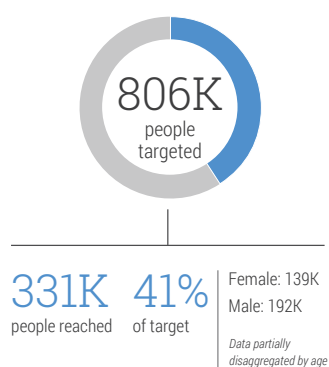


NUMBER OF IDPS REGISTERED

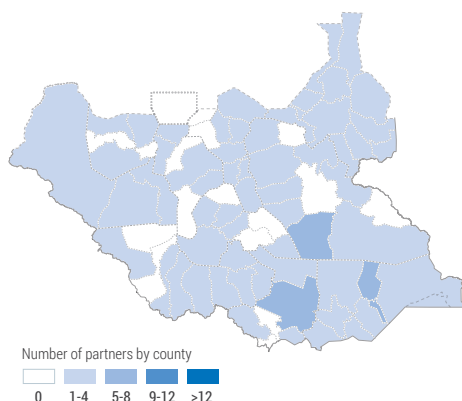


Education

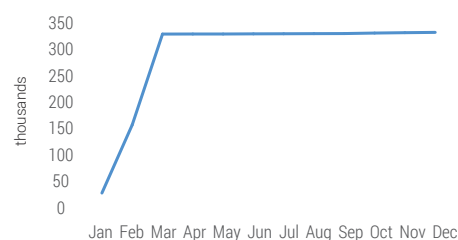
3.1M PEOPLE IN NEED



OPERATIONAL PRESENCE

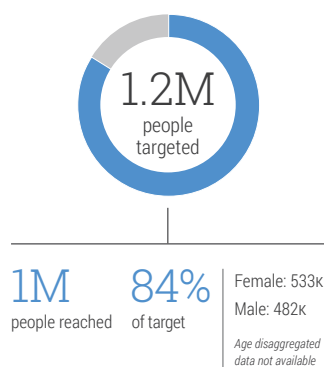


CHILDREN ACCESSING EDUCATION IN EMERGENCY

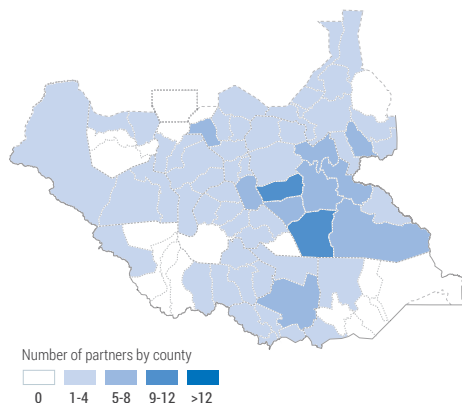


Emergency Shelter and Non-Food Items

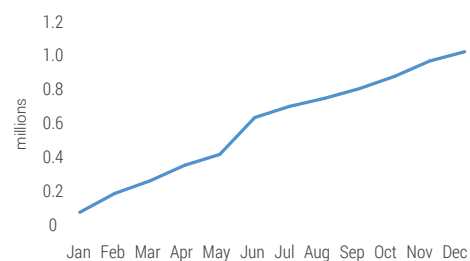
2.3M PEOPLE IN NEED



OPERATIONAL PRESENCE



NUMBER OF PEOPLE SERVED WITH ES/NFI



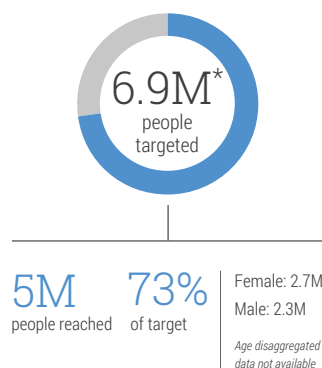
Note: Funding data for 2020 updated from Financial Tracking Service (FTS) as of 24 February 2021.

Response achievements by cluster

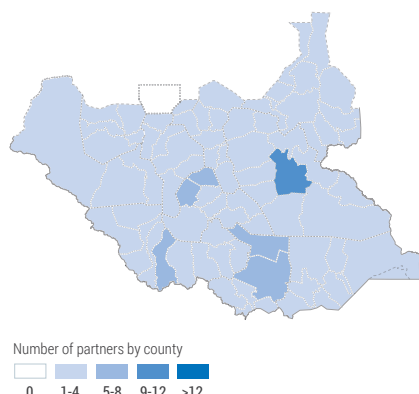


Food Security and Livelihoods

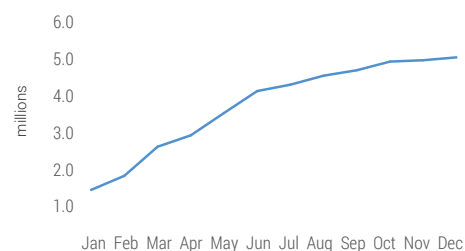
6.7M PEOPLE IN NEED



OPERATIONAL PRESENCE



NUMBER OF PEOPLE ASSISTED WITH FOOD



\$817M
requested



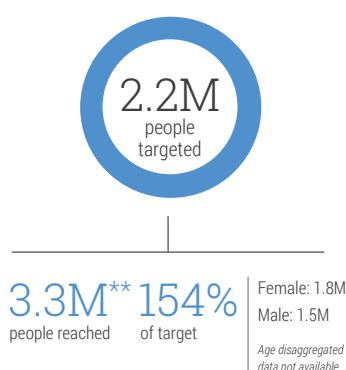
74
HRP partners

* People targeted is higher than the people in need as it includes newly vulnerable people during COVID-19 based on market dependence.

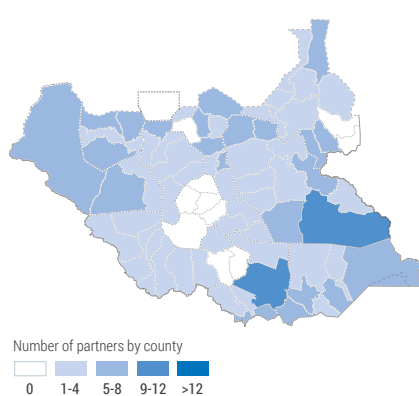


Health

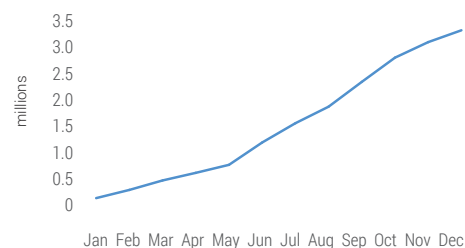
3.6M PEOPLE IN NEED



OPERATIONAL PRESENCE



NUMBER OF PEOPLE REACHED THROUGH CONSULTATIONS



\$214M
requested



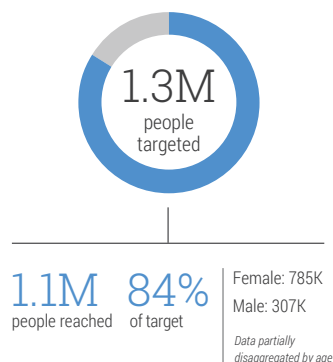
55
HRP partners

** According to the Health Cluster, the proxy indicator of "number of health consultations" results in double-counting and over-achievement of the cluster target.

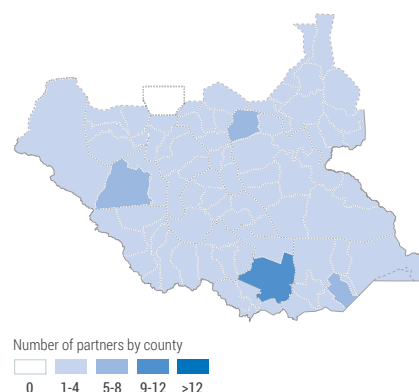


Nutrition

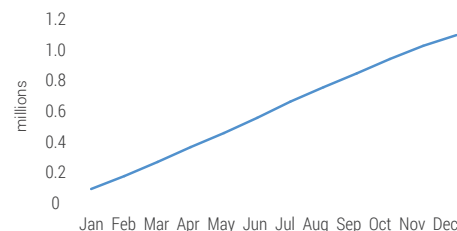
2.1M PEOPLE IN NEED



OPERATIONAL PRESENCE



NUMBER OF PEOPLE* WITH SEVERE AND MODERATE ACUTE MALNUTRITION ADMITTED FOR TREATMENT



\$230M
requested



51
HRP partners

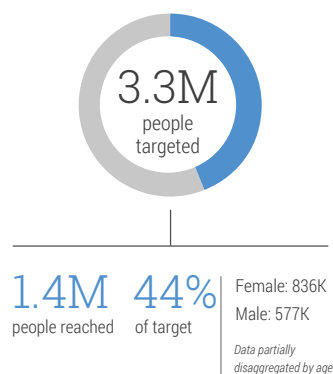
* Boys and girls aged 0-59 months, children aged 5 and above, and pregnant and lactating women

Note: Funding data for 2020 updated from Financial Tracking Service (FTS) as of 24 February 2021.

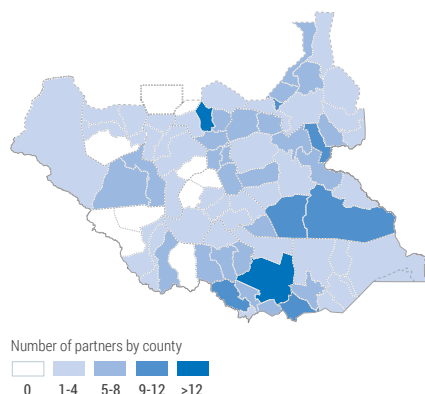
Response achievements by cluster

Protection

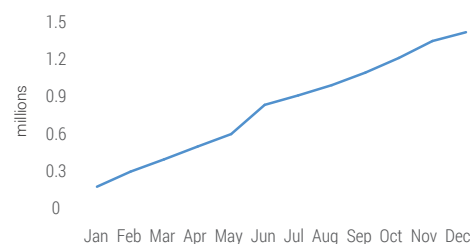
4.8M PEOPLE IN NEED



OPERATIONAL PRESENCE

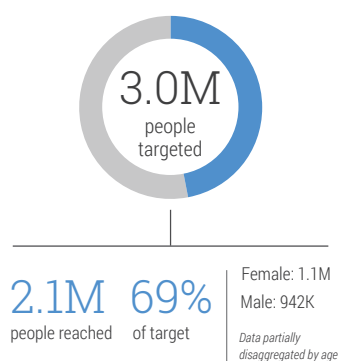


NUMBER OF PEOPLE REACHED

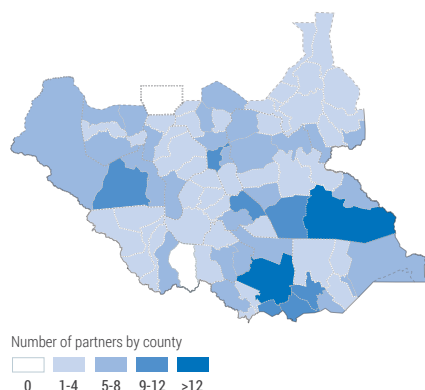


Water, Sanitation and Hygiene

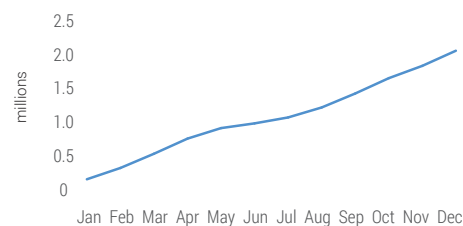
5.5M PEOPLE IN NEED



OPERATIONAL PRESENCE



NUMBER OF PEOPLE WITH ACCESS TO IMPROVED WATER SOURCES



Logistics

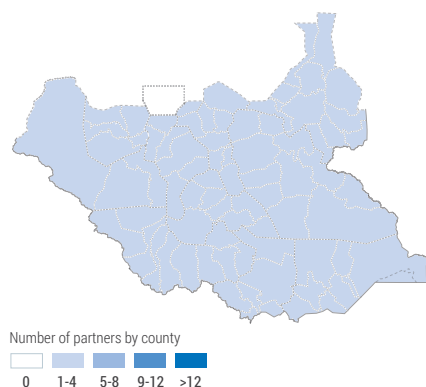
300 organizations

42,524 UNHAS passengers served

8,660 MT of cargo transported to field locations

17,773 MT of cargo consolidated and transported from warehouses to airstrips, riverside docks and PoC sites

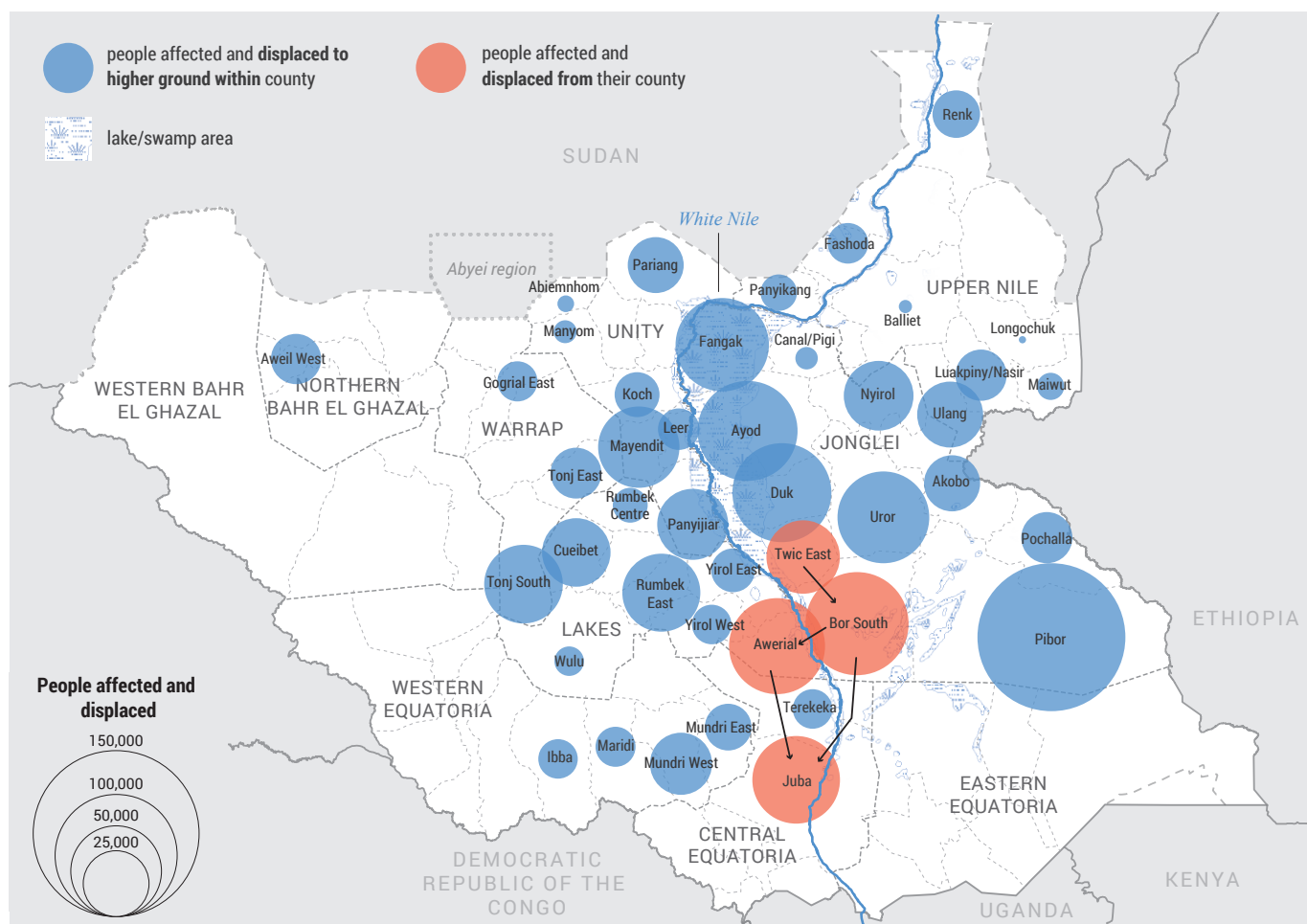
OPERATIONAL PRESENCE



NUMBER OF ORGANIZATIONS UTILIZING LOGISTICS SERVICES



Focus on the flood response



Flood response highlights



Food Security and Livelihoods

1.4M

people reached with food assistance



Water, Sanitation and Hygiene

469K

people reached with WASH support



Nutrition

185K

people reached with nutrition support



Emergency Shelter and NFIs

98K

people received emergency shelter and essential household items



Health

57K

people provided with healthcare services



Protection

17K

people reached with general protection services



Child Protection

22K

people reached with child protection services



GBV Protection

41K

people reached with GBV protection services



Logistics

2,400MT

of humanitarian cargo transported to 97 locations